



SLC NEWS

Newsletter for SLC Members

Spring / Summer 2019

SPOTLIGHT

While the bears have been hibernating this winter, the SLC has been busy on many fronts. We began to work on the 60 acres on South Grand that we received in 2017. We had our workday in October and constructed a wonderful woodland trail that starts from the new parking area. The path is blazed and fairly level. It passes through several types of habitat, including Stoney Brook, and comes out on the far end of the 14 acres of meadow. Don't be surprised if you see various species of waterfowl and upland birds, as well as deer and other mammals. This summer we will turn the soil in the meadow and tackle invasive plants. Our aim is to have the entire meadow prepped for seeding of grass and wildflowers this fall, to emerge in 2020. Our property stewards, Norm Noble and Todd Mervosh, are leading the charge on this major project.

We are also near to completing the receipt of two properties that will add over 30 acres to the more than 530 acres we currently own. These parcels are at opposite ends of town, and one will bring beautiful upland terrain while the other is wetland and bog adjacent to existing SLC land. We are in discussions with another landowner for a wonderful piece of property that brings great biodiversity. If the acquisition comes to fruition, we hope to be able to work with the Suffield High School (SHS) science, environmental and agri-science programs to use the site as an outdoor laboratory.

We had three programs this winter that were well attended. For the annual meeting, Justin Kaput, a SHS environmental teacher gave a rousing talk to a packed house about how the outdoors shaped his life, and how he is passing on his passion for the environment through his teaching. We hope to have an encore performance so he can tell us about his trip to Antarctica this past December as a recipient of the National Geographic Grosvenor Teacher Fellowship. February saw the annual ice harvest in Granville, MA, and the ice was perfect for cutting. Lastly, in March we joined with the Friends of Hilltop Farm and the 2nd Baptist Church to hold a workshop on native bees. We learned about carpenter bees and their role in pollination and built them houses.

We hope that you will visit some of our many properties this summer. Try to join us at one or more of our activities, including our annual wildflower or bird walk. We also encourage our members to participate in Suffield's Plan of Conservation and Development. This very important process occurs every ten years and establishes how our citizens would like to see the town evolve over the next ten years. Take advantage of the open forums to express your feeling on open space and land use in our wonderful town. You will find meeting dates on the town website.

Past Events

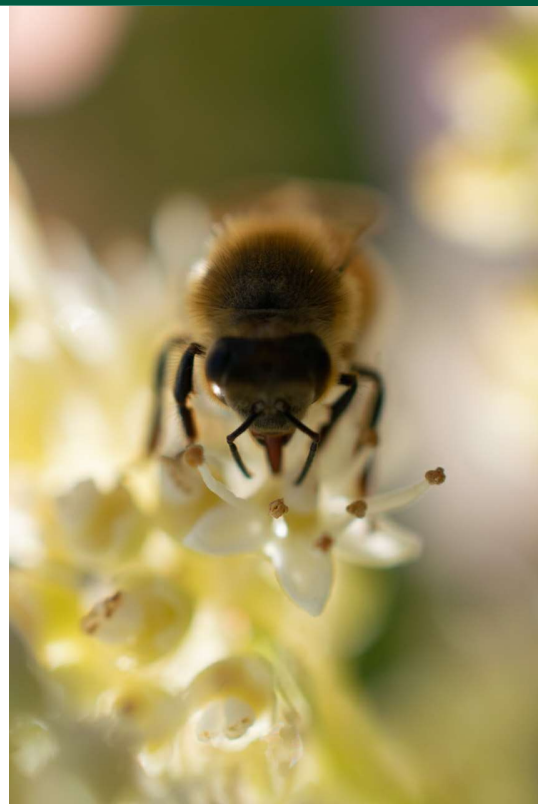
On March 3rd, 2019, SLC in partnership with the Friends of the Farm at Hilltop and the Second Baptist Church Green Team hosted a workshop on the importance of native bees and other pollinators in our own gardens and backyards. Participants built “bee hotels” to shelter our hard-working friends. Bobbie Rogers presented the following facts:

Why invite bees to our yard?

Because we need them. Bees and other pollinators play a very important role in our ecosystem: pollination. This is the transfer of pollen from the anthers of one flower to the stigma of another flower. Over 85% of our food crops depend on pollinators to help set seed and make fruit. Because of their body structure, native bees are much more effective pollinators than non-native honeybees. So if you enjoy eating fruits and vegetables, and even chocolate, then you can thank a bee.

Social Bees vs. Solitary Bees

Honeybees, bumblebees, and several other bees are social. They live in colonies consisting of a fertile queen, female workers, and male drones. The bees all work together for the good of the hive.



Solitary bees nest alone or in groups but are responsible for their own offspring. Because they don't have a hive to defend, the male bees have no stinger and the females have a very small one that is too short to penetrate skin. Females choose a bare, sunny spot to dig a tunnel up to a foot long. At the end of each branch of the tunnel, she creates a brood chamber/cell which will be the nursery for just one baby, called a larva. She fills the brood cell with bee bread—a nutritious mixture of pollen, nectar and saliva, enough to grow from egg to adult. She lays the egg, and then seals the chamber. Some bees instead take advantage of currently existing holes such as hollow stems, rock crevices, or holes in dead wood.

Bees need your help!

Populations of native bees have declined significantly over the past few decades, reducing some species to a critical level. This is due mainly to 4 human activities: habitat destruction, loss of food sources, climate change, and pesticide use.

Learn More:

www.pollinator.org

www.nativebeesofnewengland.com



DIRECTORS

Melanie Brown	Art Christian	Chris Childs	Muriel Coatti	Brian Dudack	Edward Ewald
Secretary	2018-2021	President	2018 - 2021	2017 - 2020	Vice President
2017-2020	668-7556	2016-2019	668-2414	543-0787	2016 - 2019
789-3819		668-7140			668-6678



Mr. Justin Kaput, Suffield High School environmental science teacher, was the invited speaker at the SLC Annual Meeting on Nov. 8, 2018. He is a native of Suffield and a 1994 SHS graduate. Justin delivered an excellent presentation to a large and appreciative audience about the vital importance of natural areas in his development as a young person and in his enthusiasm for teaching students about ecology. Justin spoke about his then upcoming journey to Antarctica as a Grosvenor Teacher Fellow, one of a select group of elite science teachers

chosen by the National Geographic Society and Lindblad Expeditions. The thrilling voyage occurred in December, and Justin will continue to share his experiences and inspiring message with students, the Suffield Community, and beyond for years to come.

Upcoming Events

Wildflower Walk

Come take a walk with us to see over 30 species of native wildflowers. The annual wildflower hike will occur on **Sunday, May 5th at 2pm**, rain or shine. Please meet us at Sunrise Park at the pavilion.

Bird Watching Hike

The Land Conservancy will be showcasing our work on the South Grand property on our annual bird watching hike. The hike will begin on **Saturday, May 11 at 8am**. The property location can be found about a mile down the road from the Airway's Golf Course heading South towards East Granby. Across from a large open field, you will see a small gravel driveway on the left of South Grand, just before the entrance to a residential property. The driveway will lead you down the path to the parking lot where we will meet. Prepare for muddy conditions.

Connecticut Trail Day

The annual CT Trail Day hike will be held on **Saturday, June 1st at 10am**. Please meet at the intersection of Phelps and Mountain Roads (Metacomet Trail).

South Grand Property Work Day

We will be continuing to work on the South Grand property to expand the trails. We will start working at **11am on Sunday, June 2nd**.

All events will be held rain or shine. Come prepared to all events with sturdy walking shoes or boots and bug spray. Long pants are recommended to prevent exposure to poison ivy or ticks.

DIRECTORS

Marie Gauthier	Joe Grimard	Todd Mervosh	Norm Noble	Art Sikes	Joellen Woodworth
2016-2019	2017-2020	Past President	2017-2020	Treasurer	2018-2021
729-5460	668-1338	2018-2021	668-1721	2016-2019	668-0612
		668-2988		668-0414	

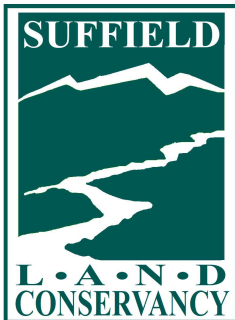
UPCOMING EVENTS

May 5, Sunday	2pm	Wildflower Walk <i>@ Sunrise Park Pavilion</i>
May 11, Saturday	8am	Bird Watch Hike <i>@ New South Grand Property</i>
June 1, Saturday	10am	CT Trail Day <i>@ Mountain X Phelps Rd - Metacomet Trail</i>
June 2, Sunday	11am	Work Day <i>@ New South Grand Property</i>

FIND US ON AMAZON SMILE

You can donate to SLC through your purchases on Amazon.com by going to the following URL:

<https://smile.amazon.com/ch/06-1031536>



SUFFIELD LAND CONSERVANCY
P.O. Box 421
Suffield, CT 06078